

enjoy
your
moment



BARISTA 500 PRO TOUCH

Engineered for reliability,
designed for experience

Necta



Engineered for reliability, designed for experience

The latest innovation from Necta, combining advanced technology with stunning, contemporary design



Distinctive product attributes

Superior user experience

- An ergonomic touch-screen is integrated within the drink delivery area with a single, sleek and compact element for an improved user experience.
- A 21.5" fully customizable user interface improves product attractiveness and simplifies the purchasing process.

Digital native

- Integrated connectivity enabling native cloud services to allow remote rebooting and support daily work operations.
- Simple and intuitive programming menu shared across the entire product range.

Barista wide values

Guaranteed performance

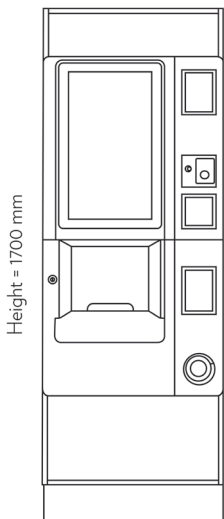
- Establishing a new performance reference for reliability and efficiency, thanks to enhanced components longevity, perfect for quality-focused operators worldwide.
- Exceptional in-cup quality from our patented Z4000 brewer to meet everyone's tastes.

Sustainable excellence

- Designed with bio-circular plastics, up to 96% recyclable components, a 100% lead-free hydraulic circuit and 100% recyclable packaging.
- Sets the standard in the freestanding segment with up to A+ rating per EVA-EMP protocol.
- Industry-leading ESG credentials and improved carbon footprint (up to -8%) showcase Evoca's sustainability leadership.



Technical data & dimensions



- 230 V
- 50 Hz
- 1850 W (single boiler)
2850 W (double boiler)
- Boilers: 1x0.5 L | 1x0.2 L + 1x0.5 L
- 3/4" BSP [15 mm] mains
- USB / LAN / Wi-Fi / BT
- Weight 136 kg

Depth = 770 mm
Door open = 1250 mm

Width = 600 mm



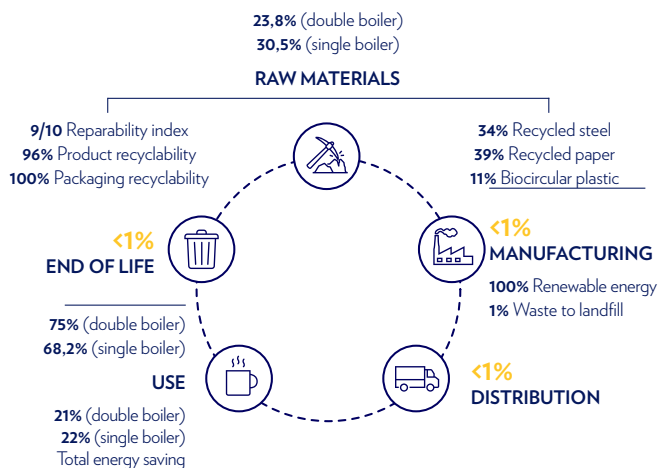
Specifications

- Layout: ES, 2ES
- 21.5" industrial full HD Touch-screen
- Customisation of user interface through MyGUI tool (HTML5)
- Z4000 coffee brewer
- 100% lead-free hydraulic circuit
- Cups capacity: 500 (single cup) | 750 (Multicup)
- Coffee beans capacity: 3 kg
- Mixer and motor doser with variable speed 24 V
- Up to 5 soluble canisters
- Self adjusting blades (optional)

Product carbon footprint scorecard

Carbon footprint

- Per annum: 301 kgCO₂eq (double boiler) / 226kgCO₂eq (single boiler)
- Cradle to cradle: 3,908 kgCO₂eq (double boiler) / 2,936 kgCO₂eq (single boiler)



Scan the QR code to explore our website,
or contact us at sustainability@evocagroup.com

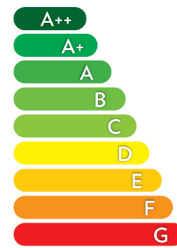


Energy efficiency A/A+ rated

Single boiler

ENERGY CONSUMPTION

More efficient



A+

Less efficient

Total energy consumption
according to test results within 24 hours

128 Wh/L

Energy consumption in Idle mode

1234 Wh/24h

Drink volume

150 ml

Double boiler

ENERGY CONSUMPTION

More efficient



A

Less efficient

Total energy consumption
according to test results within 24 hours

144 Wh/L

Energy consumption in Idle mode

1884 Wh

Drink volume

150 ml



Necta

EVOCA S.p.A.
Via Roma, 24 | 24030 Valbrembo (BG), Italia | Tel. +39 035 606 111
necta.evocagroup.com

