



Necta

EVOCA S.p.A.
Via Roma, 24 | 24030 Valbrembo (BG), Italia | Tel. +39 035 606 111
necta.evocagroup.com



Evoca Spa reserves the right to change product specifications according to a constantly evolving design policy.

enjoy
your
moment

BARISTA 600 PRO TOUCH

Engineered for reliability,
designed for experience

Necta



Engineered for reliability,
designed for experience

enjoy
your
moment

The latest innovation from Necta, combining advanced technology with stunning, contemporary design



Distinctive product attributes

Superior user experience

- An ergonomic touch-screen is integrated within the drink delivery area with a single, sleek and compact element for an improved user experience.
- A 21.5” fully customizable user interface improves product attractivity and simplifies the purchasing process.

Digital native

- Integrated connectivity enabling native cloud services to allow remote rebooting and support daily work operations.
- Simple and intuitive programming menu shared across the entire product range.

Barista wide values

Guaranteed performance

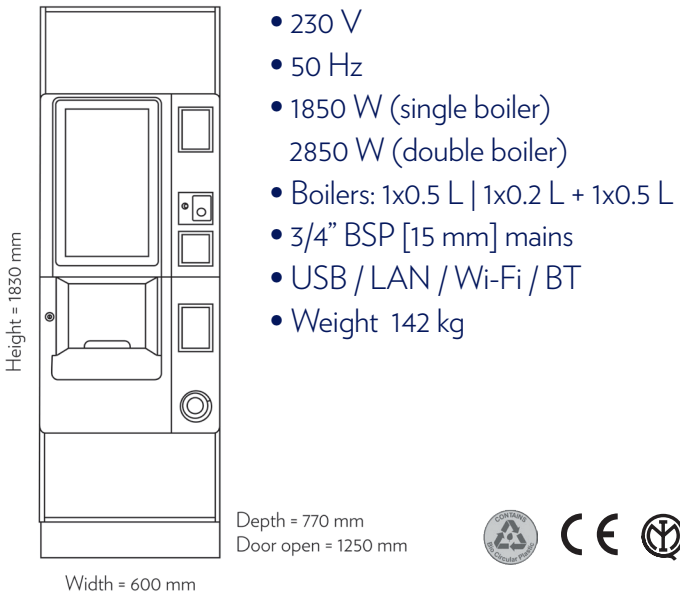
- Establishing a new performance reference for reliability and efficiency, thanks to enhanced components longevity, perfect for quality-focused operators worldwide.
- Exceptional in-cup quality from our patented Z4000 brewer to meet everyone’s tastes.

Sustainable excellence

- Designed with bio-circular plastics, up to 96% recyclable components, a 100% lead-free hydraulic circuit and 100% recyclable packaging.
- Sets the standard in the freestanding segment with up to A+ rating per EVA-EMP protocol.
- Industry-leading ESG credentials and improved carbon footprint (up to 7%) showcase Evoca’s sustainability leadership.



Technical data & dimensions



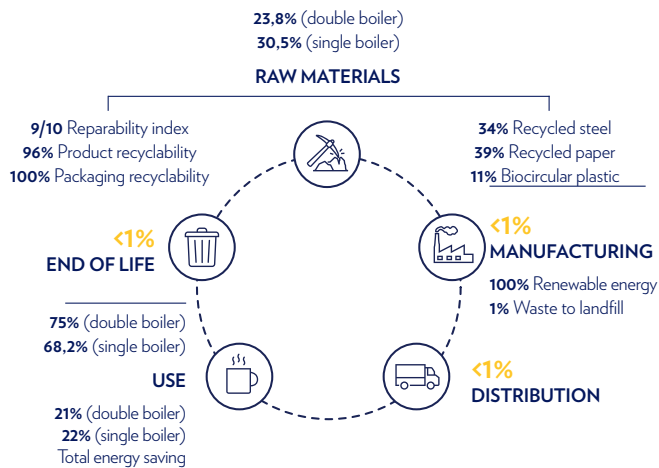
Specifications

- Layout: ES, 2ES
- 21.5” industrial full HD Touch-screen
- Customisation of user interface through MyGUI tool (HTML5)
- Z4000 coffee brewer
- 100% lead-free hydraulic circuit
- Cups capacity: 620 (single cup) | 850 (Multicup)
- Coffee beans capacity: 3 kg (ES) / 3,8 kg (2ES)
- Mixer and motor doser with variable speed 24 V
- Up to 6 soluble canisters
- Self adjusting blades (optional)

Product carbon footprint scorecard

Carbon footprint

- Per annum: 314 kgCO2eq (double boiler) / 226kgCO2eq (single boiler)
- Cradle to cradle: 4,083 kgCO2eq (double boiler) / 2,936 kgCO2eq (single boiler)

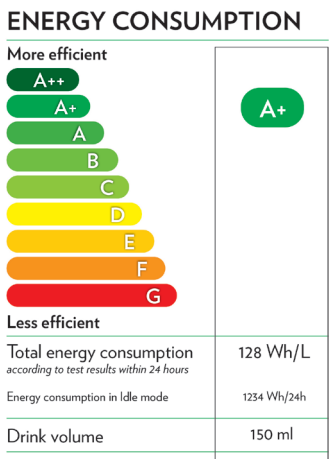


For more information about sustainability at Evoca



Energy efficiency A/A+ rated

Single boiler



Double boiler

