



enjoy
your
moment



Necta

EVOCA S.p.A.
Via Roma, 24 | 24030 Valbrembo (BG), Italia | Tel. +39 035 606 111
necta.evocagroup.com



BARISTA 500

When reliability
meets great taste

Necta

Evoca Spa reserves the right to change product specifications according to a constantly evolving design policy.



When reliability meets great taste

enjoy
your
moment

The heart of the Necta range – the best-selling machine and the ultimate choice for cutting-edge reliability.

Distinctive product attributes

The broadest range on the market

- Available in several configurations –from Espresso to Full Instant or Espresso with Leaf Tea– offering operators the flexibility to choose the ideal setup for any location.

Quick and intuitive user experience

- A backlit capacitive keypad offers 20 intuitive direct selection options. A graphic display ensures seamless interaction, guiding the user during the purchase.
- Backlit customizable photographic panels designed for impactful communication and increased engagement.

Digital native

- Integrated connectivity enabling native cloud services to allow remote rebooting and support daily work operations.
- Simple and intuitive programming menu standardized across the entire product range.

Barista wide values

Guaranteed performance

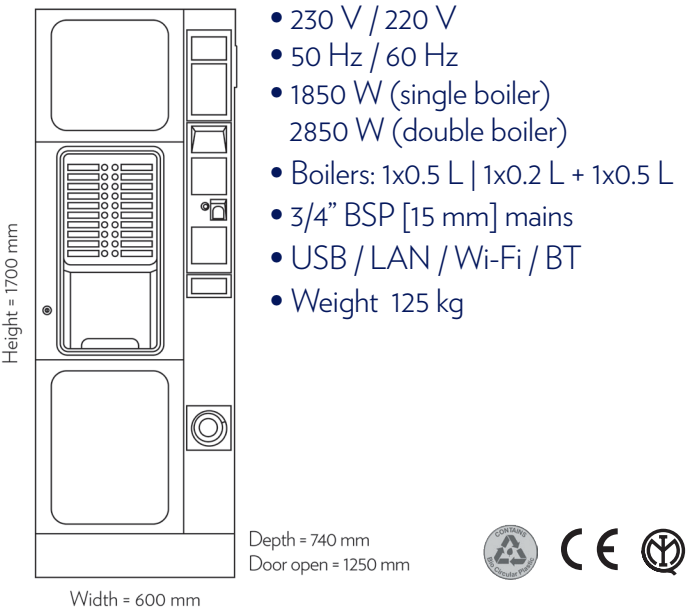
- Proven reliability widely recognized worldwide, making Necta a trusted choice for quality-driven operators.
- Exceptional in-cup quality from our patented Z4000 brewer, available in different versions, to meet everyone’s tastes.

Sustainable excellence

- Designed with bio-circular plastics, up to 96% recyclable components and 100% recyclable packaging.
- Sets the standard in the Autocoffee segment with up to A+ rating per EVA-EMP protocol.
- Industry-leading ESG credentials showcase Evoca’s sustainability leadership.



Technical data & dimensions



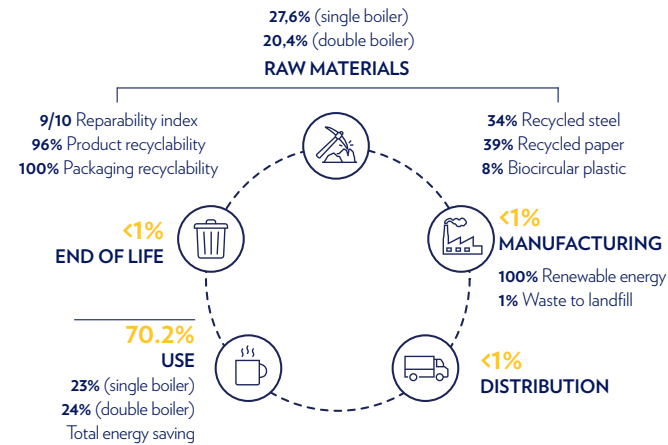
Specifications

- Layout: ES, 2ES
- 13.3" industrial full HD Touch-screen
- Z4000 coffee brewer
- Cups capacity: 500
- Coffee beans capacity: 3 kg
- Mixer and motor doser with variable speed 24 V
- Up to 5 soluble canisters
- Self adjusting blades (optional)

Product carbon footprint scorecard

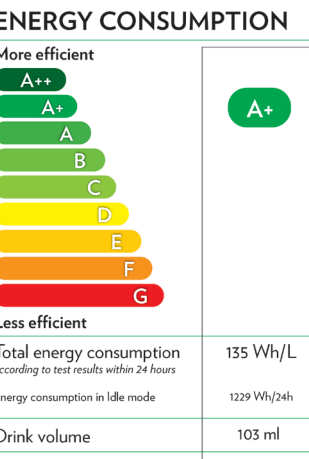
Carbon footprint

- Per annum: 215 kgCO₂eq (single boiler) / 291 kgCO₂eq (double boiler)
- Cradle to cradle: 2,800 kgCO₂eq (single boiler) / 3,786 kgCO₂eq (double boiler)



Energy efficiency A+ rated

Single boiler



Double boiler

