



enjoy
your
moment



Necta

EVOCA S.p.A.
Via Roma, 24 | 24030 Valbrembo (BG), Italia | Tel. +39 035 606 111
necta.evocagroup.com



BARISTA 300

Coffee wherever needed

Necta



Coffee wherever needed

enjoy
your
moment

Uncompromised in-cup quality, anywhere up to 300 cups

Distinctive product attributes

Versatile applications

- Placed on a base cabinet or paired with the S&F Gusto 6 Mini for seamless integration.
- Ideal for small offices, coworking spaces, grocery stores, hair salons, tire shops, and car dealerships.

Quick and intuitive user experience

- A backlitged capacitive keypad offers 20 intuitive direct selection options. A graphic display ensures seamless interaction, guiding the user during the purchase.

Barista wide values

Guaranteed performance

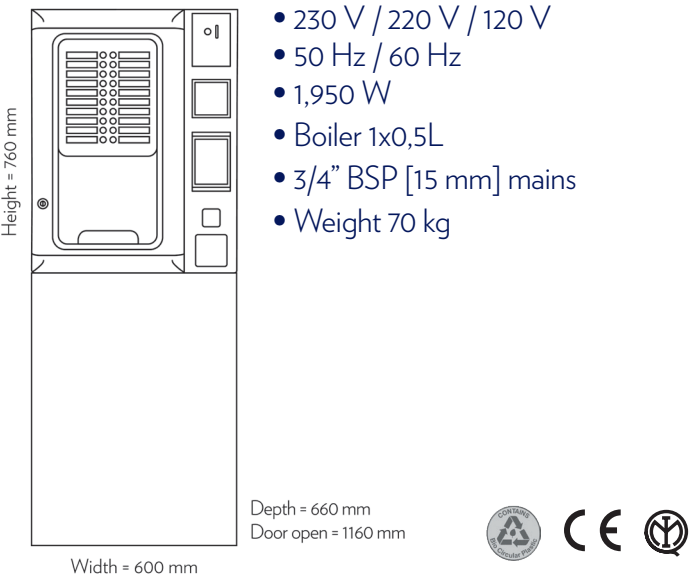
- Proven reliability widely recognized worldwide, making Necta a trusted choice for quality-driven operators.
- Exceptional in-cup quality from our patented Z4000 brewer, available in different versions, to meet everyone’s tastes.

Sustainable excellence

- Designed with bio-circular plastics, up to 96% recyclable components and 100% recyclable packaging.
- Sets the standard in the Autocoffee segment with up to A rating per EVA-EMP protocol.
- Industry-leading ESG credentials showcase Evoca’s sustainability leadership.



Technical data & dimensions



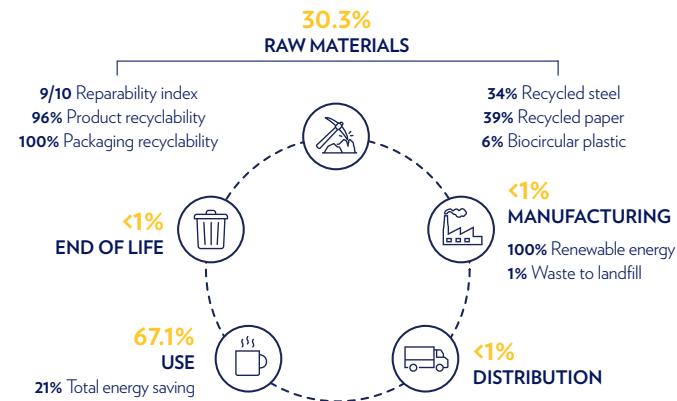
Specifications

- Layout: ES
- Capacitive keypad with 20 selection buttons
- Z4000 coffee brewer
- Cups capacity: 300
- Coffee beans capacity: 1.8 kg
- Mixer and motor doser with variable speed 24 V
- Up to 5 soluble canisters
- Self adjusting blades (optional)

Product carbon footprint scorecard

Carbon footprint

- Per annum: 179 kgCO₂eq
- Cradle to cradle: 1,661 kgCO₂eq



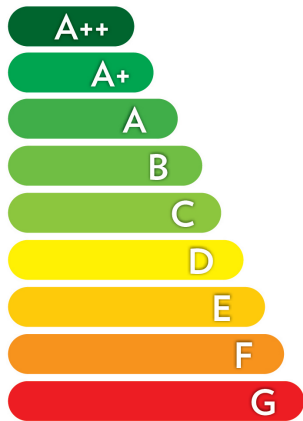
For more information about sustainability at Evoca



Energy efficiency A rated

ENERGY CONSUMPTION

More efficient



Less efficient

Total energy consumption according to test results within 24 hours	164 Wh/L
Energy consumption in Idle mode	926.4 Wh/24h
Drink volume	100 ml