



enjoy  
your  
moment



# Necta

EVOCA S.p.A.  
Via Roma, 24 | 24030 Valbrembo (BG), Italia | Tel. +39 035 606 111  
[necta.evocagroup.com](http://necta.evocagroup.com)



## BARISTA 300 TOUCH

The digital table top

# Necta





# The digital table top

enjoy  
your  
moment

The 300-cups that combines the best coffee preparation technologies with digital solutions

## Distinctive product attributes

### Versatile applications

- Placed on a base cabinet or paired with the S&F Gusto 6 Mini for seamless integration.
- Ideal for small offices, coworking spaces, grocery stores, hair salons, tire shops, and car dealerships.

### Digital native

- A 13.3" fully customizable user interface improves product attractivity and simplifies the purchasing process.
- Integrated connectivity enabling native cloud services to allow remote rebooting and support daily work operations.
- Simple and intuitive programming menu standardized across the entire product range.

## Barista wide values

### Guaranteed performance

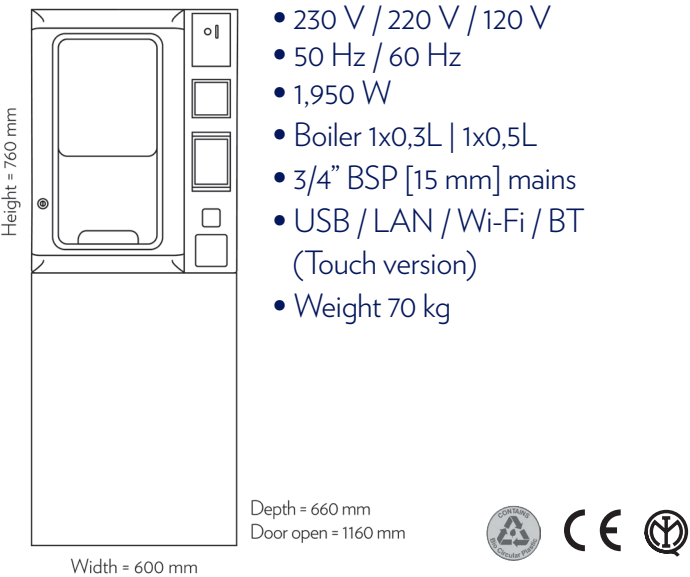
- Proven reliability widely recognized worldwide, making Necta a trusted choice for quality-driven operators.
- Exceptional in-cup quality from our patented Z4000 brewer, available in different versions, to meet everyone's tastes.

### Sustainable excellence

- Designed with bio-circular plastics, up to 96% recyclable components and 100% recyclable packaging.
- Sets the standard in the Autocoffee segment with up to A rating per EVA-EMP protocol.
- Industry-leading ESG credentials showcase Evoca's sustainability leadership.



## Technical data & dimensions



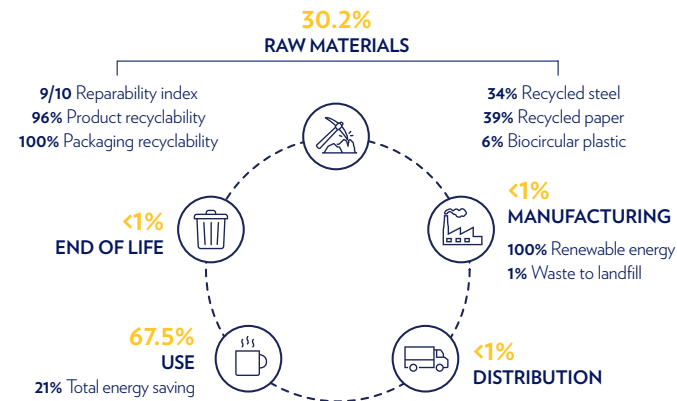
## Specifications

- Layout: ES
- 13.3" industrial full HD Touch-screen
- Z4000 coffee brewer
- Cups capacity: 300
- Coffee beans capacity: 1.8 kg
- Mixer and motor doser with variable speed 24 V
- Up to 5 soluble canisters
- Self adjusting blades (optional)

## Product carbon footprint scorecard

### Carbon footprint

- Per annum: 199 kgCO<sub>2</sub>eq
- Cradle to cradle: 1,790 kgCO<sub>2</sub>eq



For more information about sustainability at Evoca



## Energy efficiency A rated

### ENERGY CONSUMPTION

More efficient



Less efficient

|  |             |
|--|-------------|
| Total energy consumption according to test results within 24 hours | 172 Wh/L    |
| Energy consumption in Idle mode                                    | 1092 Wh/24h |
| Drink volume   | 100 ml      |