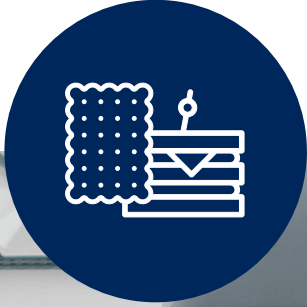


Orchestra Range



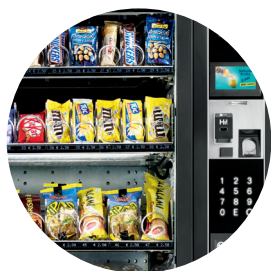
Necta

Orchestra Range



An elegant and innovative design

- Black anodized aluminium cabinet with framed user interface.
- Orchestra is available with numeric capacitive keypad or touch screen selection area.
- Wide graphic display 4.3", 16 millions colours that allows the broadcasting of nutritional information, slide show and spots.
- White cell with LED lighting, see-through drawers for the best visibility of the products.



An elegant and refined model



Visioshop, panoramic drawers for a perfect vision



High definition window



Orchestra is available in standard or touch versions



Features

Height	1830 mm
Width	890 mm
Depth	793 mm
Weight	280 kg ca.



Flexibility

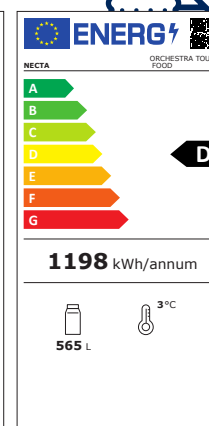
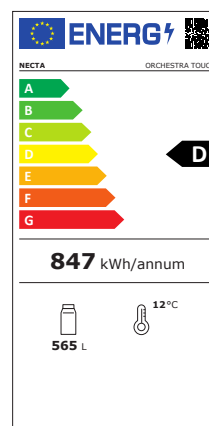
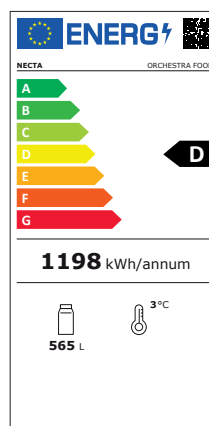
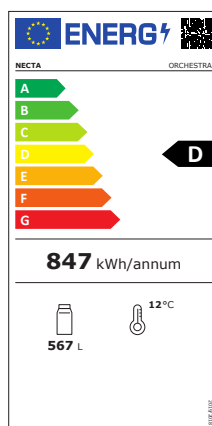
- Up to 7 drawers which can be easily positioned inside the cell thanks to the system Vertical flex (V-Flex).
- Optimization of drawer space to accommodate different pack sizes simultaneously.
- See-through drawer Visioshop offers the possibility to go from 8 to 10 selections per tray (+38 snack products).
- Enhanced ETL on trays.
- Visioshop has a sturdy structure able to resist to heavy loads - up to 53 kg.



Energy efficiency

- New R290 cooling technology.
- Foamed cabinet and high efficiency green components.
- Drastic reduction of energy consumption in comparison to existing S&F models.

Energy consumption labels



necta.evocagroup.com

Necta

EVOCA SPA
Via Roma 24, 24030 Valbrembo (BG) Italia
Tel. +39 035 606111 - Fax +39 035 606519

